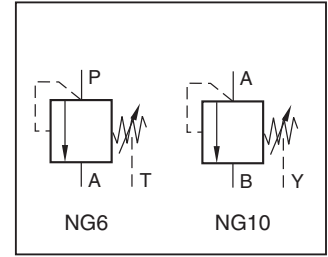


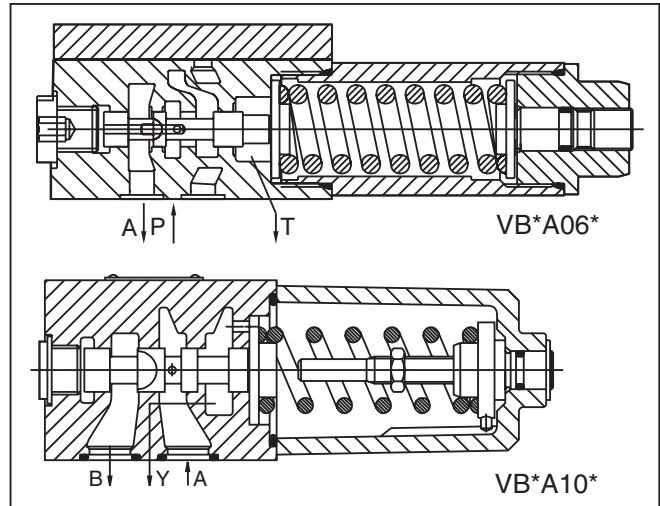
General Description

Series VB are direct operated pressure relief valves with manual adjustment. Series VB valves can also be used as pressure sequence valves because of the high pressure capability in the outlet port and the external drain port.



Specifications

Size	NG6, NG10
Interface	ISO 5791
Mounting Pos.	Unrestricted
Ambient Temp.	-20°C to +80°C (-4°F to +176°F)
Max. Operating Pressure	Size 6: Ports P and A 350 Bar (5075 PSI), Port T depressurized Size 10: Ports A and B 315 Bar (4568 PSI), Port Y depressurized
Pressure Range	Size 6: 25, 64, 160, 210, 350 Bar (363, 928, 2320, 3045, 5075 PSI) Size 10: 64, 125, 210 Bar (928, 1813, 3045 PSI)
Nominal Flow	Size 6: 25 LPM (6.6 GPM) Size 10: 60 LPM (15.9 GPM)
Pressure Fluid	Hydraulic oil according to DIN 51524 ... 525
Pressure Fluid Temperature	Recommended: +30C to +50°C (+86°F to +122°F) Permitted: -20°C to +70°C (-4°F to +158°F)
Viscosity	Recommended: 30 to 50 cSt (mm ² /s) Permitted: 20 to 380 cSt (mm ² /s)
Filtration	ISO 4406 (1999), 18/16/13



Features

- Spool valve.
- Manifold mounting.
- Five pressure ranges at NG6.
- Three pressure ranges at NG10.
- Two adjustment modes.

Ordering Information

VB

Sequence Valve

□

Maximum Pressure Setting

A

Adjustment Screw with Hexagon Socket

□

Size

V

Seal Fluorocarbon

□

Gauge Port

□

Lock

□

Design Series

NOTE:
Not required when ordering.

Code	Description
025 ¹⁾	25 Bar (363 PSI)
064	64 Bar (938 PSI)
125 ²⁾	125 Bar (1813 PSI)
160 ¹⁾	160 Bar (2320 PSI)
210	210 Bar (3045 PSI)
350 ¹⁾	350 Bar (5075 PSI)

Code	Description
06	NG6
10	NG10

Code	Description
G ¹⁾	G 1/4"
M	M12x1.5

¹⁾ only NG6

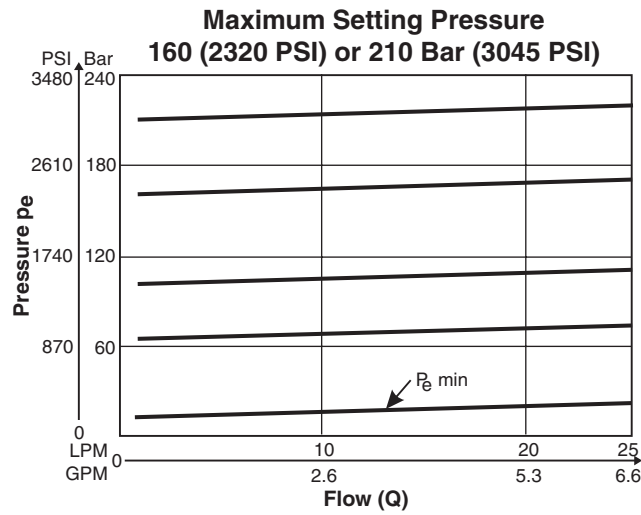
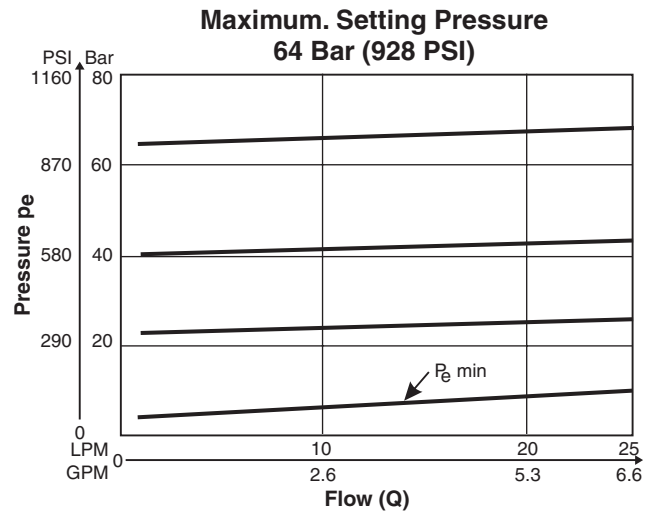
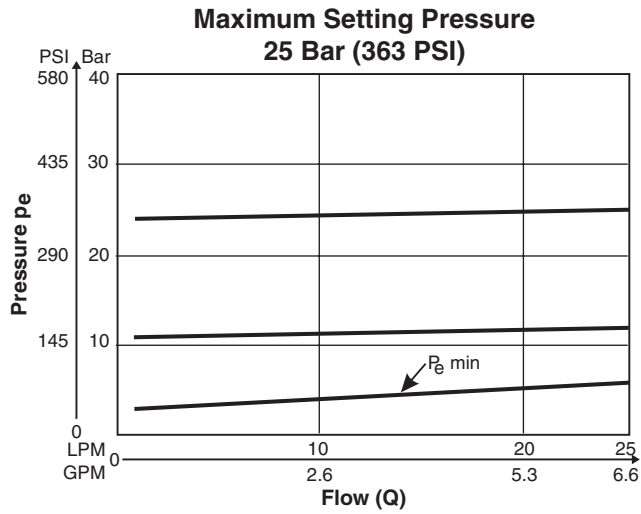
Code	Description
Omit	No Lock
Z	Cylinder Lock

¹⁾ only NG6
²⁾ only NG10

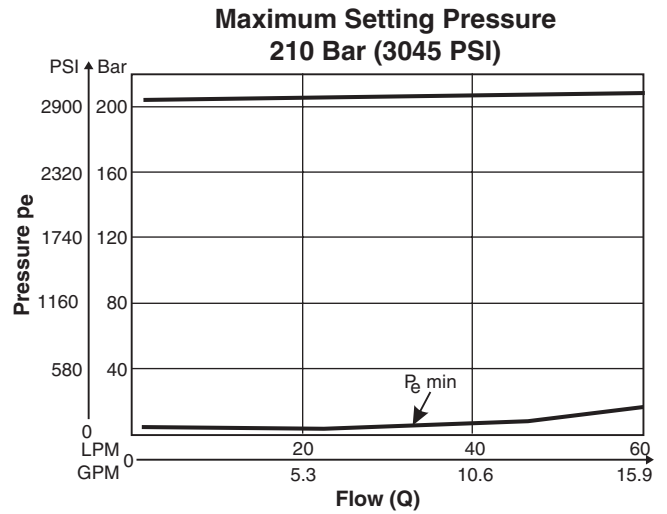
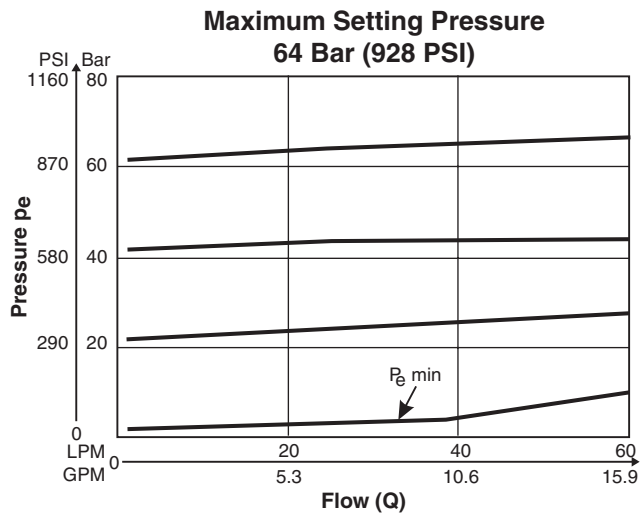
Weight:

VB*A06 1.3 kg (2.9 lbs.)
 VB*A10 3.7 kg (8.2 lbs.)

VB*06



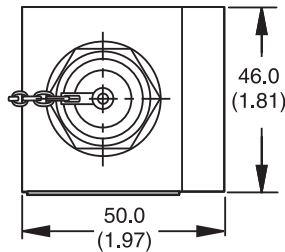
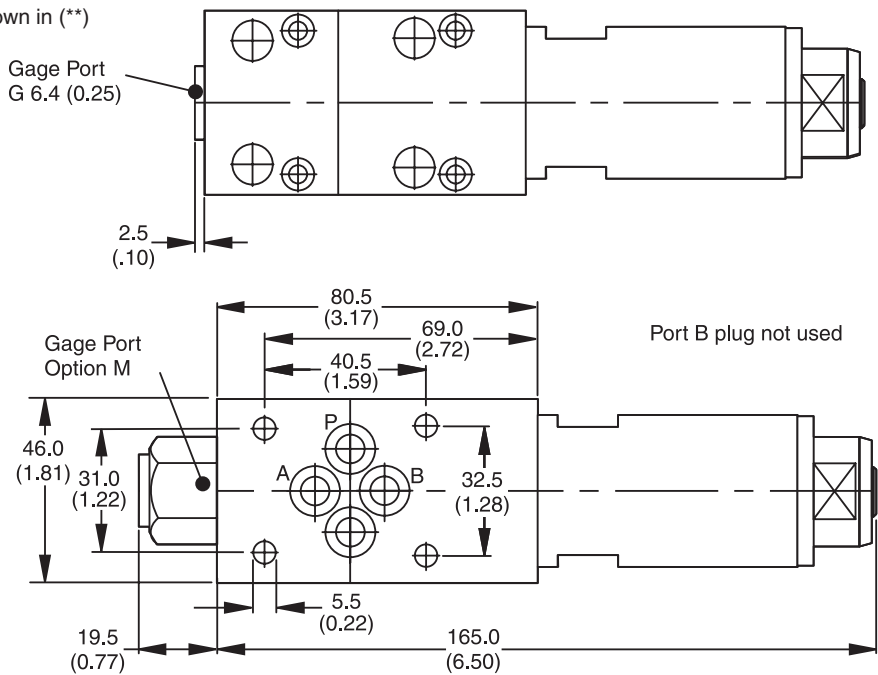
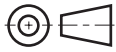
VB*10



VB.indd, dd

VB*06

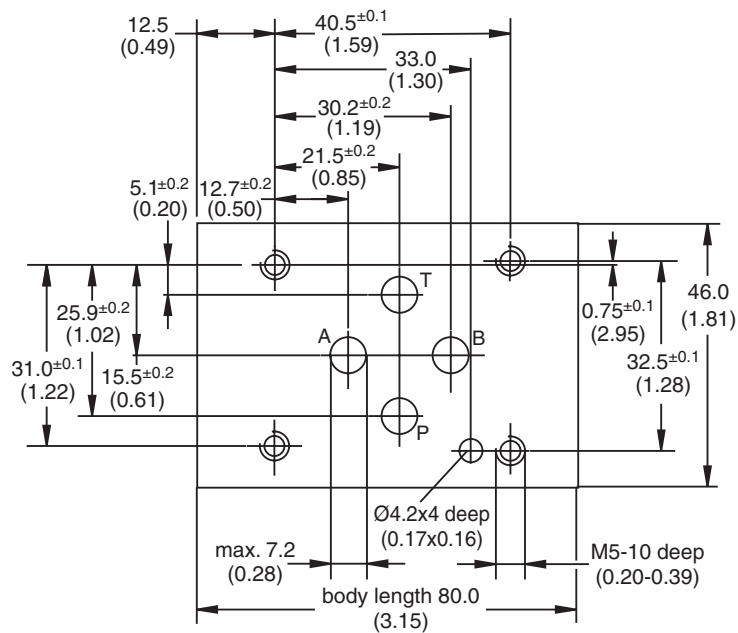
Inch equivalents for millimeter dimensions are shown in (**)



Surface Finish	$\sqrt{R_{max}6.3}$ $\square 0.01/100$
Bolt Kit DIN912 12.9	BK375 4x M5x30
	7.6 Nm (5.6 lb.-ft.) ±15%
Seal Kit Fluorocarbon	SK-VB/VM/VS V

**Mounting Pattern ISO 5781-03-04-0-00
(NFPA D03, CETOP 3, NG6)**

Inch equivalents for millimeter dimensions are shown in (**)



VB.indd, dd

